

COLUMN (S-TYPE)

Model	Size (L×D×H / mm)	Remark
KS-ARM-SW	H=350	S type

HOLE 19.8mm

ARM HEAD

Model	Size (L×D×H / mm)	Remark
KS-ARM-HD	H=350	Head

General Weight: not more than 24 inches of normal load (including)
High Weight: normal 24 inches or more (including)
24 inches is available in common
(this may vary depending on the weight of the manufactured product)

LCD ARM (S-TYPE) SET

Model	Size (L×D×H / mm)	Remark
KS-SARM		S type



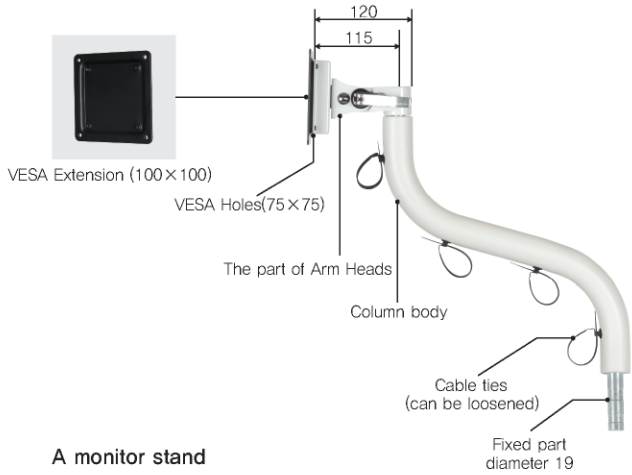
COLUMN (I-TYPE)

Model	Size (L×D×H / mm)	Remark
KS-ARM-AA	(350X250)	—



COLUMN (I-TYPE2)

Model	Size (L×D×H / mm)	Remark
KS-ARM-AC2	H260	—



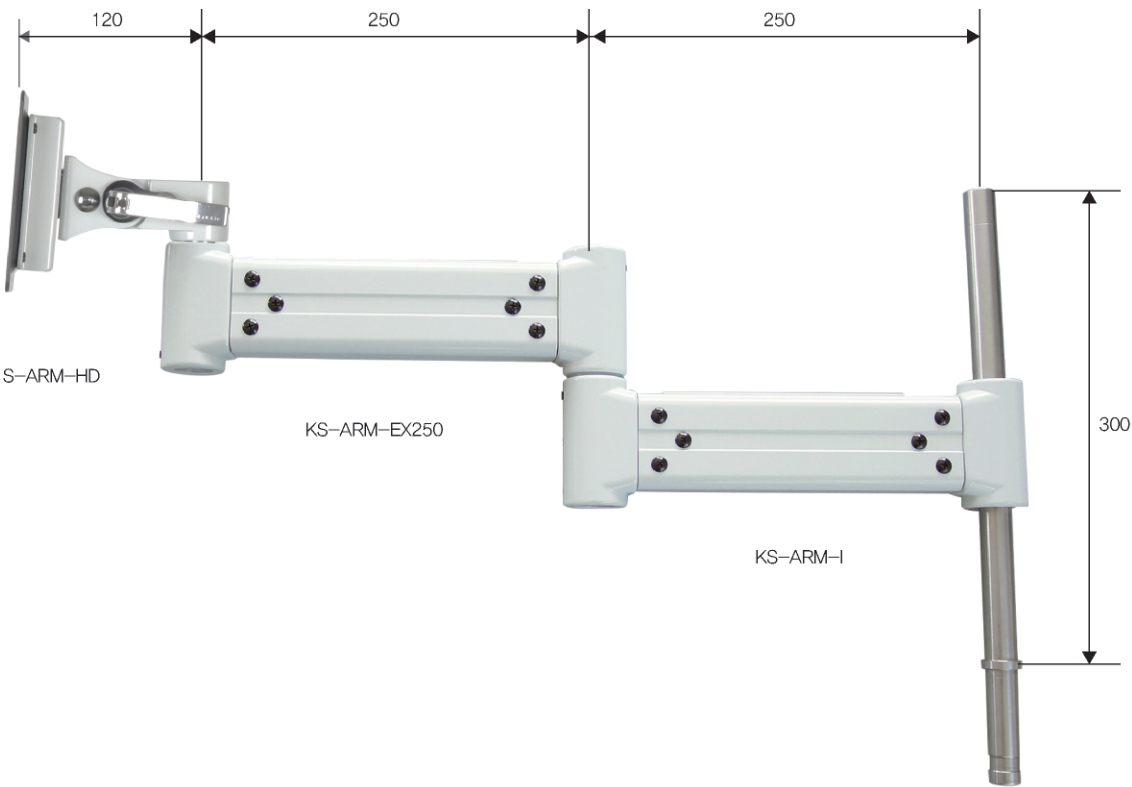
A monitor stand

A monitor stand
Monitor stand for profile carts (monitor arm). Compatible only with Kosanmedico carts, the diameter is inserted in a 19.8mm hole, VESA Support for Stand on monitors with holes in the VESA specification. When purchasing, VESA Holes must be checked for existence A 360 degree swing is available for 24 inches or less. The head supports pivot (90 degrees) and tilt functions.



COLUMN (I-TYPE)

Model	Size (L×D×H / mm)	Remark
KS-ARM-AC	H:230	—



A monitor stand I-TYPE

Compatible only with Kosanmedico carts, the diameter is inserted in a 19.8mm hole and Monitor stand for profile carts Support for Stand on monitors with holes in the VESA specification. When purchasing, VESA Holes must be checked for existence Very effective for distance adjustment in complex structures and environments You can select a location around the three-part center.

COLUMN (I-TYPE)

Model	Size (L×D×H / mm)	Remark
KS-ARM-I	H=300	Column

Stainless
Column role of ARM-EX250,450

EXTENSION

Model	Size (L×D×H / mm)	Remark
KS-ARM-EX250	H=250, 450	Length extension

Can't be used alone, but Can be combined with ARM-HD



SIDE ARM HOLDER

Model	Size (L×D×H / mm)	Remark
KS-PIH-BL	—	—
KS-PIH-GR	—	—
KS-SH100	—	—

Check the column type of the cart.
330, 350, 450, 500 Series

EXTENSION ARM SET

Model	Size (L×D×H / mm)	Remark
KS-LARM		



Compatible with Kosanmedico carts and required for additional monitor in carts.
Install it in the left or right outer part of the cart. S type and I type are supported.
Additional installation is also possible on carts that are already in use.

JOINT ARM -A



1	Model	Size (L×D×H / mm)	Remark
	KS-JA-A		SET

2	Model	Size (L×D×H / mm)	Remark
	KS-ARM-HD	W=350	Head

General Weight: not more than 24 inches of normal weight(including)
High Weight: normal 24 inches or more (including)
24 inches is available in common
(It may vary depending on the weight of the manufactured product)

3	Model	Size (L×D×H / mm)	Remark
	KS-ARM-JW	W=255	-

Using Combine with ARM-HD
The two joints vary by 90 degrees to allow for a height-length extension.

4	Model	Size (L×D×H / mm)	Remark
	KS-ARM-I02	W=145	-

Connect to ARM-EX Series and join to Columns

JOINT ARM -B



1	Model	Size (L×D×H / mm)	Remark
	KS-JA-B		SET

2	Model	Size (L×D×H / mm)	Remark
	KS-ARM-HD	W=350	Head

High Weight: normal 24 inches or more (including)
24 inches is available in common
(It may vary depending on the weight of the manufactured product)

3	Model	Size (L×D×H / mm)	Remark
	KS-ARM-EX160	W=160	Extension

Using Combine with ARM-HD

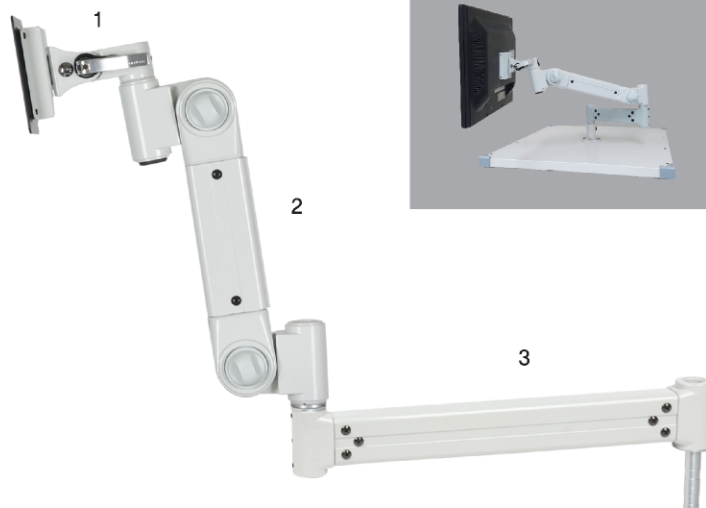
4	Model	Size (L×D×H / mm)	Remark
	KS-ARM-JW	W=255	-

Using Combine with ARM-HD
The two joints vary by 90 degrees to allow for a height-length extension.

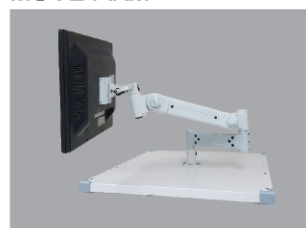
5	Model	Size (L×D×H / mm)	Remark
	KS-ARM-I02	W=145	-

Connect to ARM-EX Series and join to Columns

JOINT ARM -C



MOVE ARM



1	Model	Size (L×D×H / mm)	Remark
	KS-JA-C		SET

2	Model	Size (L×D×H / mm)	Remark
	KS-ARM-HD	W=350	Head

General Weight: not more than 24 inches of normal weight(including)
High Weight: normal 24 inches or more (including)
24 inches is available in common
(It may vary depending on the weight of the manufactured product)

3	Model	Size (L×D×H / mm)	Remark
	KS-ARM-JW	W=255	-

Using Combine with ARM-HD
The two joints vary by 90 degrees to allow for a height-length extension.

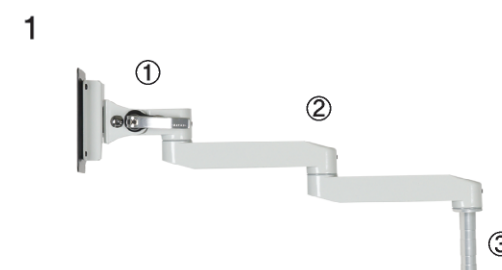
4	Model	Size (L×D×H / mm)	Remark
	KS-ARM-EX450	W=450	Extension

Using Combine with ARM-HD
Combine with EX250

5	Model	Size (L×D×H / mm)	Remark
	KS-ARM-I02	W=145	-

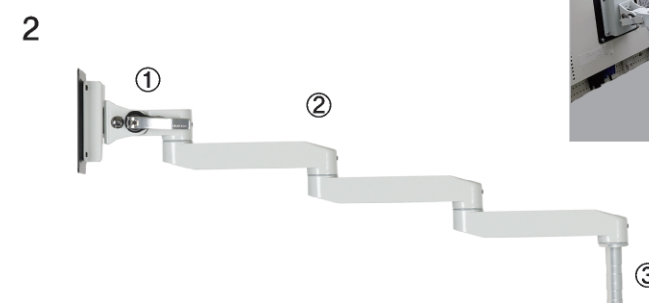
Connect to ARM-EX Series and join to Columns

EXTENSION ARM -A



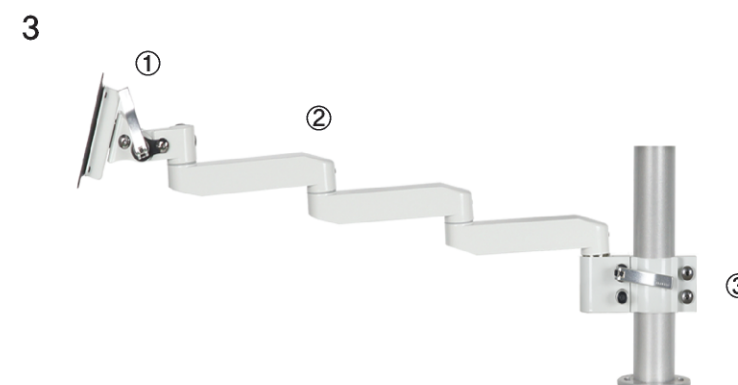
- 1
- ① KS-ARM-HD : 1 EA
 - ② KS-ARM-EX160 : 2 EA
 - ③ KS-ARM-I02 : 1 EA

EXTENSION ARM -B



- 2
- ① KS-ARM-HD : 1 EA
 - ② KS-ARM-EX160 : 3 EA
 - ③ KS-ARM-I02 : 1 EA

CENTER ARM -A



- 3
- ① KS-ARM-HD : 1 EA
 - ② KS-ARM-EX160 : 3 EA
 - ③ KS-ARM-C01 : 1 EA

CENTER ARM -B



- 4
- ① KS-ARM-HD : 2 EA
 - ② KS-ARM-EX160 : 6 EA
 - ③ KS-ARM-C02 : 1 EA



EXTENSION 160

Model	Size (L×D×H / mm)	Remark
KS-ARM-EX160	W=160	Extension

Using Combine with ARM-HD

EXTENSION 250

Model	Size (L×D×H / mm)	Remark
KS-ARM-EX250	W=250	Extension

Using Combine with ARM-HD
Combine with EX450

EXTENSION 450

Model	Size (L×D×H / mm)	Remark
KS-ARM-EX450	W=450	Extension

Using Combine with ARM-HD
Combine with EX250



EXTENSION HOLDER

Model	Size (L×D×H / mm)	Remark
KS-ARM-H02	H=145	—

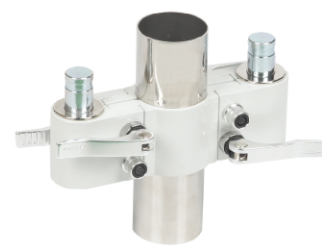
Connect to ARM-EX Series and join to Columns



CENTER HEAD (1HOLE)

Model	Size (L×D×H / mm)	Remark
KS-ARM-C01	φ 50.8	1 Head

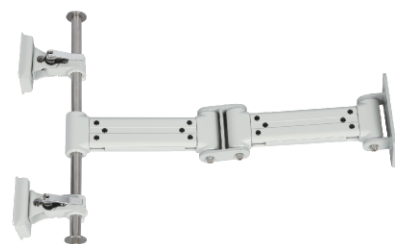
Set the monitor ARM to the center of the cart
ARM-HD, which can be connected to an EX series



CENTER HEAD (2HOLE)

Model	Size (L×D×H / mm)	Remark
KS-ARM-C02	φ 50.8	Head

Set the monitor ARM to the center of the cart
ARM-HD, which can be connected to an EX series



DUAL MONITOR ARM

Model	Size (L×D×H / mm)	Remark
KS-ARM-D-1	(RFQ)	—



STAND MONITOR ARM

Model	Size (L×D×H / mm)	Remark
KS-ARM-HDMS	315×290×300	—

HD Medical Monitor Arm
The hanger of desk



[Back] 후면

TABLET HOLDER

Model	Size (L×D×H / mm)	Remark
KS-T0030L	VESA100x100	9" ~ 13"



[Front] 전면



[Back] 전면

TABLET HOLDER

Model	Size (L×D×H / mm)	Remark
KS-T0011L	VESA100x100	7" ~ 11"



TABLET STAND

Model	Size (L×D×H / mm)	Remark
KS-TLTS0011A	VESA100x100	9" ~ 13"



SINGLE MONITOR ARM

Model	Size (L×D×H / mm)	Remark
KS-LDA-12U	VESA100x100	LED 15" ~ 27"

